

TECHNICAL DATA

EECO[®]

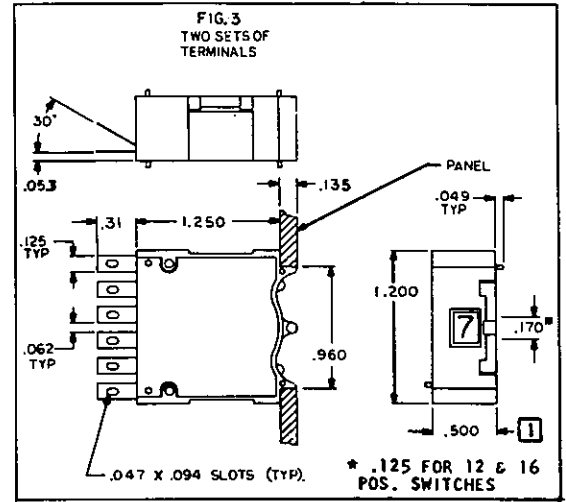
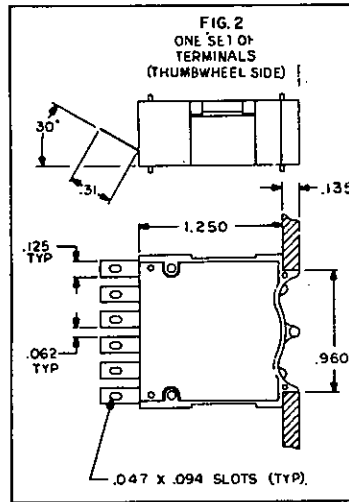
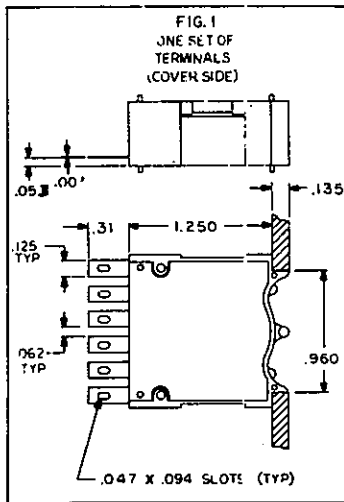
1776/1976 SWITCH SERIES

TERMINAL LAYOUT

MOUNTING DIMENSIONS

EECO SWITCH

Standard Terminal Configurations



COVER SIDE SHOWN

See Fig. 1

MODEL NUMBER	DESCRIPTION
--------------	-------------

177602G	BCD 1-2-4-8
177603G	Excess 3, 1-2-4-8
177604G	Resistor Decade 1-2-3-6
177608G	BCD 1-2-4
177615G	Binary 1-2-4-2'
177617G	Complement of 9's complement
177623G	Complement of 10's complement
177625G	Resistor Decade 1-2-2-2-2
177627G	1 pole, 10 pos. 1-2-4-5 code
177632G	Binary 1-2-4-8
177633G	1 pole, 16 pos. BCD marked 0-15
177634G	1 pole, 16 pos. BCD marked 0-9 A-F
177642G	Modified 5 bit Teletype code
177656G	BCD with-not true bits connected to separate common
177674G	1 pole, 10 pos. Johnson code

See Fig. 2

MODEL NUMBER	DESCRIPTION
--------------	-------------

177612G	BCD 1-2-4-8 complement only
177618G	BCD 1-2-4 complement only
177619G	9's complement 1-2-4-8
177621G	10's complement 1-2-4-8
177624G	Resistor Decade 1-2-4-2

See Fig. 3

MODEL NUMBER	DESCRIPTION
--------------	-------------

177601G	Decimal
177605G	2 pole, 2 throw repeating, marked 0,5
177606G	BCD with complement 1-2-4-8
177607G	7 Bar Indicator
177609G	BCD with complement 1-2-4
177610G	2 pole, 2 throw repeating, marked 0,1
177611G	2 pole, 2 throw repeating, marked +,-
177613G	NOT/NOR (Decimal, all shorted but one)
177614G	Excess 3 with complement 1-2-4-8
177616G	Voltage Divider (Wolff-Poggendorf)
177620G	9's complement with complement 1-2-4-8
177622G	10 complement with complement 1-2-4-8
177626G	Dual BCD 1-2-4-8
177636G	Binary with complement 1-2-4-8
177637G	2 pole, 16 pos. BCD with complement marked 0-15
177638G	2 pole, 16 pos. BCD with complement marked 0-9 A-F
177640G	2 pole, 5 pos. decimal
177641G	Decimal, shorting (make-before-break)
177645G	Binary 1-1'-2-5 with complement
177646G	4 pole BCD with complement 1-2-4-8
177652G	BCD 1-2-4-8 with diode provision
177653G	Excess 3, 1-2-4-8 with diode provision
177658G	BCD 1-2-4 with diode provision
177662G	BCD complement only with diode provision
177667G	Complement of 9's complement with diode provision
177668G	BCD complement only with diode provision
177669G	9's complement 1-2-4-8 with diode provision
177671G	10's complement 1-2-4-8 with diode provision
177682G	Binary 1-2-4-8 with diode provision

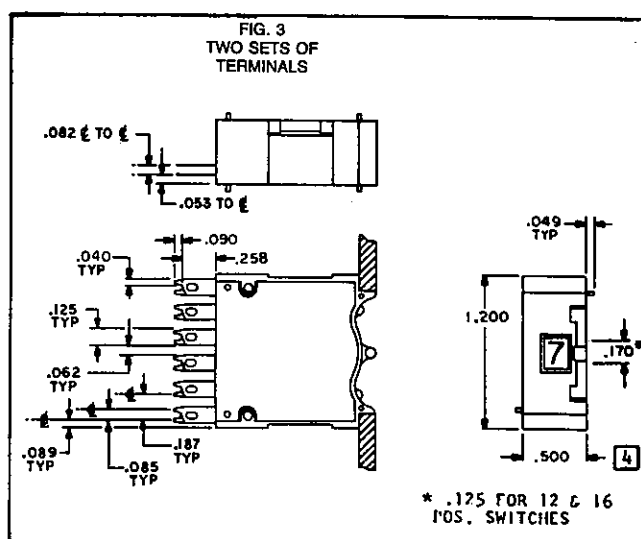
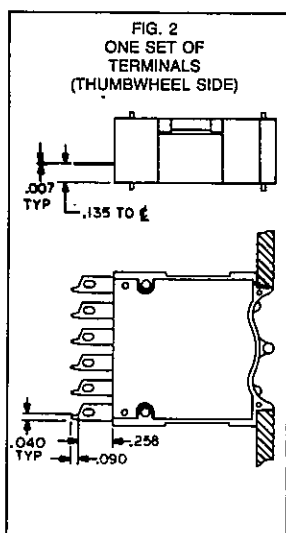
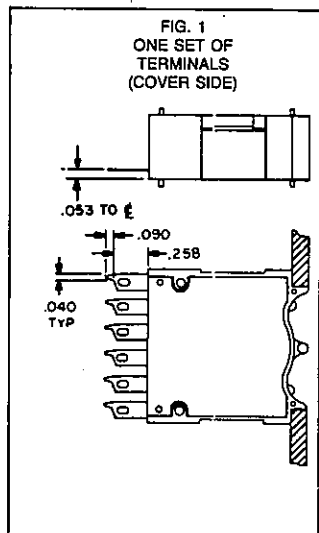
NOTE:

- 1 All dimensions shown in Fig 1,2,3, are for 1776. Dimensions for 1776 & 1976 are identical except for width of 1976 which is .350 (Fig 3)

ECCO SWITCH

Notched Terminal Configurations

1776
1976
SERIES



COVER SIDE SHOWN

See Fig. 1

MODEL NUMBER	DESCRIPTION
177602GN	BCD 1-2-4-8
177603GN	Excess 3, 1-2-4-8
177604GN	Resistor Decade 1-2-3-6
177608GN	BCD 1-2-4
177615GN	Binary 1-2-4-2 ¹
177617GN	Complement of 9's complement
177623GN	Complement of 10's complement
177625GN	Resistor Decade 1-2-2-2-2
177627GN	1 pole, 10 pos. 1-2-4-5 code
177632GN	Binary 1-2-4-8
177633GN	1 pole, 16 pos. BCD marked 0-15
177634GN	1 pole, 16 pos. BCD marked 0-9 A-F
177642GN	Modified 5 bit Teletype code
177656GN	BCD with-not true bits connected to separate common
177674GN	1 pole, 10 pos. Johnson code

See Fig. 2

MODEL NUMBER	DESCRIPTION
177612GN	BCD 1-2-4-8 complement only
177618GN	BCD 1-2-4 complement only
177619GN	9's complement 1-2-4-8
177621GN	10's complement 1-2-4-8
177624GN	Resistor Decade 1-2-4-2

See Fig. 3

MODEL NUMBER	DESCRIPTION
177601GN	Decimal
177605GN	2 pole, 2 throw repeating, marked 0,5
177606GN	BCD with complement 1-2-4-8
177607GN	7 Bar Indicator
177609GN	BCD with complement 1-2-4
177610GN	2 pole, 2 throw repeating, marked 0,1
177611GN	2 pole, 2 throw repeating, marked +,-
177613GN	NOT/NOR (Decimal, all shorted but one)
177614GN	Excess 3 with complement 1-2-4-8
177616GN	Voltage Divider (Wolff-Poggendorf)
177620GN	9's complement with complement 1-2-4-8
177622GN	10 complement with complement 1-2-4-8
177626GN	Dual BCD 1-2-4-8
177636GN	Binary with complement 1-2-4-8
177637GN	2 pole, 16 pos. BCD with complement marked 0-15
177638GN	2 ple, 16 pos. BCD with complement marked 0-9 A-F
177640GN	2 pole, 5 pos. decimal
177641GN	Decimal, shorting (make-before-break)
177645GN	Binary 1-1'-2-5 with complement
177646GN	4 pole BCD with complement 1-2-4-8
177676GN	ECCO Voltage Divider (Thumbpot)

NOTE:

1 ECCO Standard SW7600 mother boards are designed for switch models with one set of terminals, cover side of switch only. (See Fig. 1)

2 Switch models with one set of terminals on side opposite of cover can be notched, but mother board will be offset by .083 horizontally and .083 vertically from bottom side of switch. (See Fig. 2)

3 For your special p.c. boards, both sets of terminals can be notched. (See Fig. 3)

4 All dimensions shown in Fig 1,2,3, are for 1776. Dimensions for 1776 & 1976 are identical except for width of 1976 which is .350 (Fig 3)

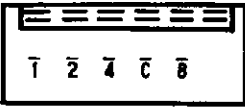
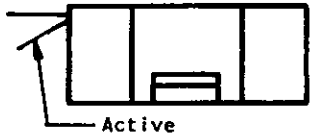
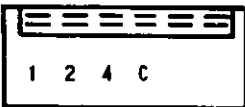
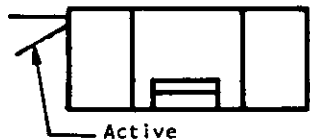
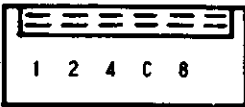

EECO SWITCH

Terminal Identification

		MODEL NUMBER	DESCRIPTION
		177602G 177603G 177617G 177623G 177632G	BCD 1-2-4-8 Excess 3, 1-2-4-8 Complement of 9's complement Complement of 10's complement Binary 1-2-4-8
		177604G	Resistor Decade 1-2-3-6
		177608G	BCD 1-2-4
		177615G	Binary 1-2-4-2'
		177625G	Resistor Decade 1-2-2-2-2
		177627G	1 pole, 10 pos. 1-2-4-5 code
		177633G 177634G	1 pole, 16 pos. BCD marked 0-15 1 pole, 16 pos. BCD marked 0-9 A-F
		177642G	Modified 5 bit Teletype code
		177656G	BCD with-not true bits connected to separate common

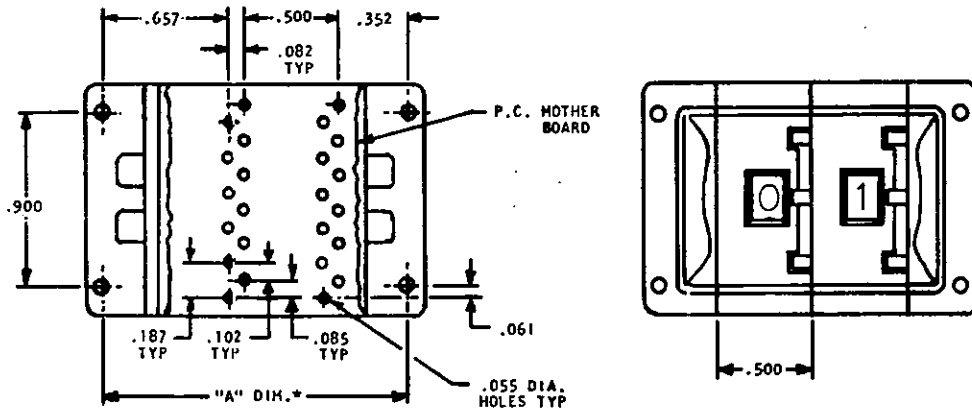
		MODEL NUMBER	DESCRIPTION
		177674G	1 pole, 10 pos. Johnson code
		177612G	BCD 1-2-4-8 complement only
		177618G	BCD 1-2-4 complement only
		177619G 177621G	9's complement 1-2-4-8 10's complement 1-2-4-8
		177624G	Resistor Decade 1-2-4-2
		177601G 177613G 177641G	Decimal NOT/NOR (Decimal, all shorted but one) Decimal, shorting (make-before-break)
		177605G 177610G 177611G	2 pole, 2 throw repeating, marked 0,5 2 pole, 2 throw repeating, marked 0,1 2 pole, 2 throw repeating, marked +,-
		177606G 177614G 177636G	BCD with complement 1-2-4-8 Excess 3 with complement 1-2-4-8 Binary with complement 1-2-4-8
		177607G	7 Bar Indicator

		MODEL NUMBER	DESCRIPTION
		177609G	BCD with complement 1-2-4
		177616G	Voltage Divider (Wolff-Poggendorf)
		177620G 177622G	9's complement with complement 1-2-4-8 10 complement with complement 1-2-4-8
		177626G	Dual BCD 1-2-4-8
		177637G 177638G	2 pole, 16 pos. BCD with complement marked 0-15 2 pole, 16 pos. BCD with complement marked 0-9 A-F
		177640G	2 pole, 5 pos. decimal
		177645G	Binary 1-1'-2-5 with complement
		177646G	4 pole BCD with complement 1-2-4-8
		177652G 177653G 177667G 177682G	BCD 1-2-4-8 with diode provision Excess 3, 1-2-4-8 with diode provision Complement of 9's complement with diode provision Binary 1-2-4-8 with diode provision
		177658G	BCD 1-2-4 with diode provision

		MODEL NUMBER	DESCRIPTION
		177662G	BCD complement only with diode provision
		177668G	BC0 complement only with diode provision
		177669G 177671G	9's complement 1-2-4-8 with diode provision 10's complement 1-2-4-8 with diode provision

EECO SWITCH

1776 Series "N" Option Printed Circuit Mother Board Hole Pattern

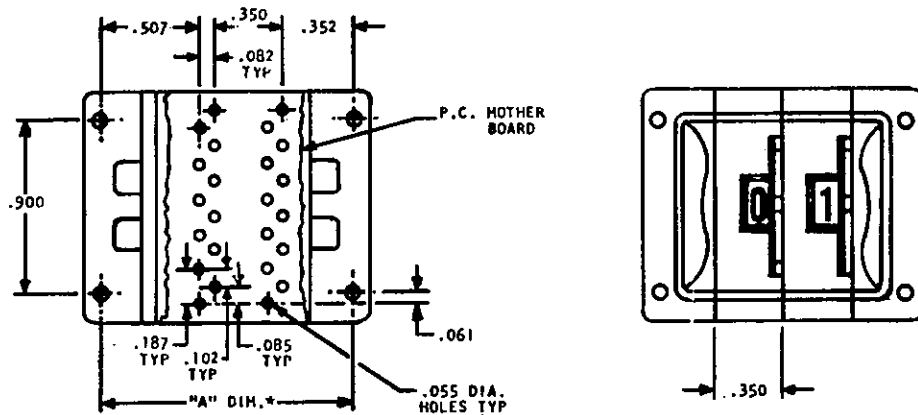


MOUNTING DIMENSIONS

No. of Stations	A
1	1.09
2	1.59
3	2.09
4	2.59
5	3.09
6	3.59
7	4.09
8	4.59
9	5.09
10	5.59

*2-STATION ASSEMBLY SHOWN
VIEWED FROM BACK OF PANEL
ROTATED 180°.

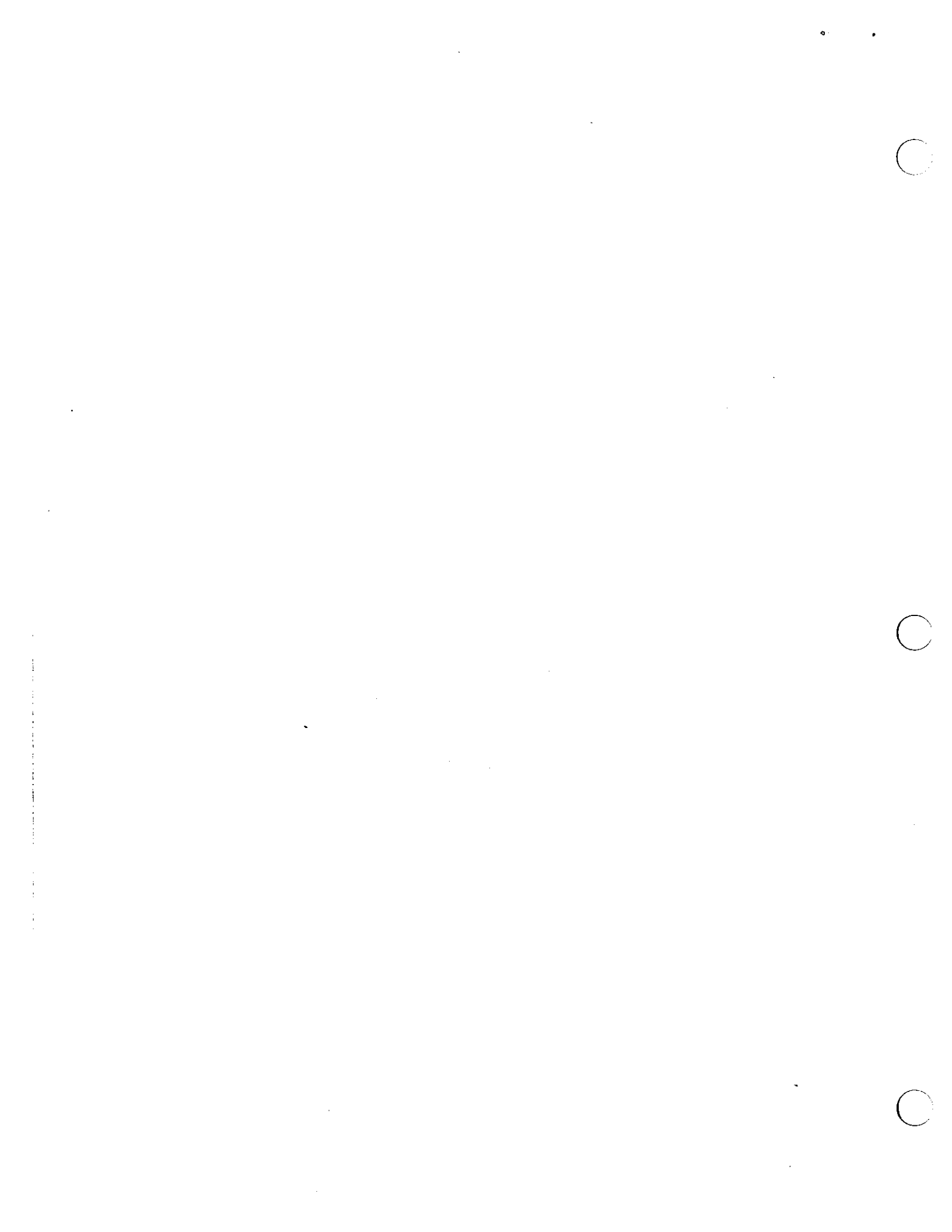
1976 Series "N" Option Printed Circuit Mother Board Hole Pattern



MOUNTING DIMENSIONS

No. of Stations	A
1	.94
2	1.29
3	1.64
4	1.99
5	2.34
6	2.69
7	3.04
8	3.39
9	3.74
10	4.09

*2-STATION ASSEMBLY SHOWN
VIEWED FROM BACK OF PANEL
ROTATED 180°.



EECO

A Transico Company

880 Columbia St.

Brea, CA 92821-2916

Phone (714) 835-6000

FAX (714) 482-9429

Web Site: www.eecoswitch.com

E-mail sales@eecoswitch.com

EECO EUROPE

Unit 5, Hazlewell Court

Bar Road

Lolworth, Cambridgeshire, CB23 8DS

England

TEL: +44 (0) 1954-781818

FAX: +44 (0) 1954-789305

Web Site: www.eecoswitch.co.uk

E-mail: sales@eecoswitch.co.uk